

The East Meru Community School - FROM COW SHED TO SCHOOL

Have you ever wondered how we got started?



Photo of original building before renovation.

Back in 2005 Ian Horne, from Wigan in the UK decided to climb Mt Kilimanjaro as a fund raising venture for a home for street children in Moshi, a town at the foot of this beautiful mountain. Whilst working at this project, Ian witnessed the poverty that families in these rural parts of Tanzania were experiencing and vowed to do what he could to help. He began talking to Tanzanian contacts and friends about the best way to do this.

Photo of Ian and Elibariki planning in the plain field where now is school.



During this time, Ian met Mary, who was later to become his wife, and Mary's family introduced him to their home village of Maruvango, nestled in the foothills of Mt Meru, Tanzania's second highest mountain. It was decided that what was really needed was a good quality school where local children from the most impoverished families could attend without cost.

Mary's brother, Elibariki and his family, very generously donated a piece of land which has become the site of the school that we know today and they also gave them the loan of a building and a derelict cowshed.



Photo of original building after renovation.



For the next few years, Ian continued to live and work in Tanzania, gradually raising sufficient funds, through his own earnings and contacts in the UK, to renovate the cowshed and convert it into the first classroom, whilst the other building became the office, staff room, accommodation, and store.

The East Meru Community School



East Meru Community School Today!

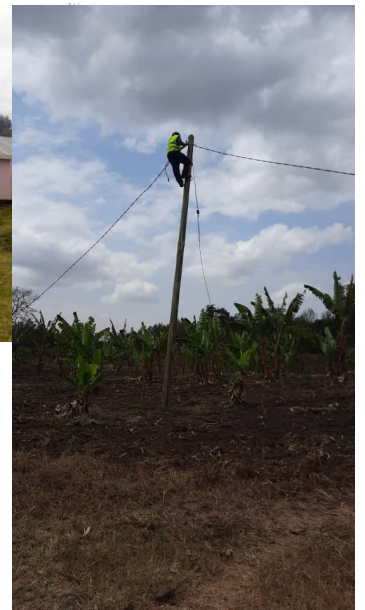
We have 8 classrooms, administration block, Dining hall, Good Staff and Students toilets, Shoe Maker Workshop and Tailor Workshop.

All of this has been achieved through funds raised by our donors and sponsors as we receive no funding from any other source.

We are so very grateful to everyone for helping us to get this far.

THANK YOU!

Electricity Project Well Successful !



Once again we thank you so much for supporting our electricity appeal, though you we managed to raised enough funds to cover the

cost and this week we are lucky to announce that we are officially have power lighting our school, library and few neighbours who are close by school, the true love from our Community, the really meaning of Community proud to be able though your donation to support others. We as school and our Community we don't have enough word to thank you all enough.

ASANTE SANA / THANK YOU SO MUCH.

The East Meru Community School



Community involvement. There is intentionality including the word ‘Community’ in the school’s name. The success and reach of the project are deeply rooted in the community.’

The school is built BY the community. The aim is ‘helping villagers to help themselves,’ rather than providing direct hand-outs, which are a short-term fix and can lead to a culture of dependency.

Most families are not able to pay for any aspect of their child's education but are more than willing to pay in kind.

With construction and grounds maintenance, large parties of family members organize themselves to clear the land, dig trenches, collect, and carry stones for construction.

Every student comes from the local community. Students with the greatest need are prioritized.

Every student receives a free education, supplies and uniforms provided by sponsorships.

They also receive daily, nutritious meals.

The majority of the staff are recruited from the local community.

We support the local community by sourcing and purchasing our fresh fruit, vegetables, and dry foodstuffs from local markets.

Fresh milk is purchased daily in the village.

The school furniture is made by local craftsmen using wood from the area.

The building construction is hired locally and building materials are purchased from local suppliers.

Parents come to school helping unloading any heavy stuff, photo shows few parents helping unloading maize and beans.

This is the time of the year where we purchase bulk food to avoid the price going up after harvesting seasons, this year it has been a big challenge because of climate change, we didn’t have enough rain which affected maize and beans farmers. This year we had to go out of village searching maize and beans for cheap price as it is our meal every day, we needed 5,000kg of maize and 2000kg of beans, this amount will help to feed our over 250 students all though the year.

To cover the cost of both maize and beans we need 4,500USD it is over our budget, We kindly asking your support.

Any amount will be much appreciated, our donation link <https://www.justgiving.com/foemcs>

The photos below are few of our prep class 2022, we are still looking for sponsors; please if you know friends, member of your family, school, churches who may be interest to join us for making change of our Community School please do share our story and email: emcsschool@gmail.com



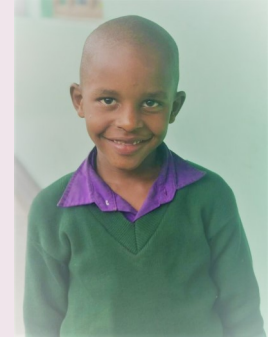
Gift Jackson (Boy)



Hance Alfa (Boy)



Hillary Laiton (Boy)



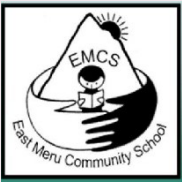
Prince Clement (Boy)



Meshaki Pascal Yona (Boy)



Joyness Elifadhili (Girl)



East Meru Community School – Tanzania Pupil Sponsorship Appeal for 2022



..... because every child deserves the
chance to learn.

For just £20, €25, AU\$30, US\$25 per month

East Meru Community School is an English Medium Primary School located in Maruvango, a remote rural village in Northern Tanzania. Children, of all abilities, are recruited from the most needy families in the local community and all their needs are provided for through our sponsorship programme.

Monthly sponsorship payments are used to provide:

Full uniform including shoes, two shirts or dresses, two pairs of trousers and one sweater

The teacher's salary, Teaching materials, Classroom stationery, Daily tea and a healthy lunch

We have small classes, a maximum of 30, and we aim to provide a conducive environment for learning with good teaching resources

and well qualified teachers who share the caring, nurturing ethos of the school.

If you would like to become part of our East Meru Community School family and sponsor one of our children, please contact Ian and Mary Horne emcsschool@gmail.com. We would be so happy to hear from you!

Find us on Facebook www.facebook.com/eastmerucommunityschool or visit our website www.eastmerucommunityschool.org