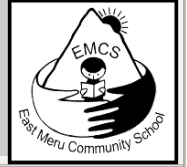




.....Because every child deserves the chance to learn.



A HUGE thank you for all your support with the food programmer at East Meru Community School, our students are happy and enjoying learning after enjoying a cup of tea in the morning and very healthy nutrition food and fruit for lunch; what else can a child ask for! good education, good environment to learn and good health, all of this happen because of your support. THANK YOU.

Very special thank you to all of our friends who have recently donated funds via our fundraising page. We received messages from some supporters who chose to donate instead of sending Christmas cards/gifts or birthdays. It really means a lot to us and we are extremely grateful for their very generous support. We direct the funds to purchase bulk stationary for the academic year.

### October 2022 - Food Appeal

We would like to pass very special thanks to all of our supporters who helped us to raise enough funds to stock enough maize and beans to feed our students until next harvest, the school menu is completed, this year after a long time without having rice and beans on our school menu, your very kind donation was covered enough to include it in the menu, the price of rice has gone up massively but we did our best to managed it.

To have rice in the menu it is especial and reward to our students as most of the family won't afford to feed the family rice dish per month so for us to be able to include rice one day a week it has make a big difference, it has brought a lot of joy and happy to our students, once again thank you everyone for sharing our appeal also for your donation little by little always take us far.

Stay safe.





## East Meru Community School



We thank our parents for teaming up again to help collect rocks and gravel for making our Community Library fence, we receive an anonymous donation which we direct it to keep our library safe.

We need to grow trees and grass which we were not able to do because of animals getting in and destroy it, it is hard to keep them away especially during the weekend but we have the best solution now and soon we will share our beautiful garden and trees around, we love keeping our environment safe, we are nature lovers.



This term has had been very special to our students and staff getting together learning, sport and enjoying to be part of our village school, we had our good friend and sponsor Mr. Sebastian visiting after few years, it was great time for him and to all of us and very special to meeting his sponsor pupils, it was nice to have you Sebastian hope to see you again soon.



It is always nice to have visitors, our students and staff loves to share the experience, as always we welcome you to visit our Community village school.

Lots of love to all of our sponsors, thank you for keeping us going much appreciated.



One of our good friends and supporter of East Meru Community School Melody Taylor symbolized us and gave a report back to Altrusa International women group in US. In the past 2 years the Altrusa group has been supporting our graduates from East Meru to Secondary School as some of the family still can't afford it, Altrusa has supported 16 students to go to boarding schools.



What an honor it was to thank Altrusa International for their support of East Meru Community School. This women's organization in the US raised funds to help send graduates of EMCS to secondary boarding schools and donated children's books for the newly opened school library. I am so grateful for Ian and Mary's vision to bring safety, food, education and empowerment to Mary's home village. I have been there numerous times over several years to see their impact. It is easy to share about their work and invite others to make a significant difference in the lives of those they serve. It is an investment you won't regret"

**By Melody Taylor Go Near Ministry Ex. Director**



### **Wheat sheaf Ramblers**

Very kind of Wheat sheaf Ramblers of Croston to fundraise for our village school, Wheat sheaf Ramblers had a 2 days walk to raise funds for East Meru Community School, we would like to thank you all for your time and donation we are very much appreciated, special thanks to Karen and Michael for hosting and organizing it all.

**Online fundraising page: <https://www.justgiving.com/foemcs>**

We would also like to thank all of our EMCS friends and supporters who have recently donated funds via our fundraising page. We received your messages. Some supporters chose not to send cards to their families and friends and donate the money to our village school. We want to tell you we are extremely grateful for your very generous support. Thank you

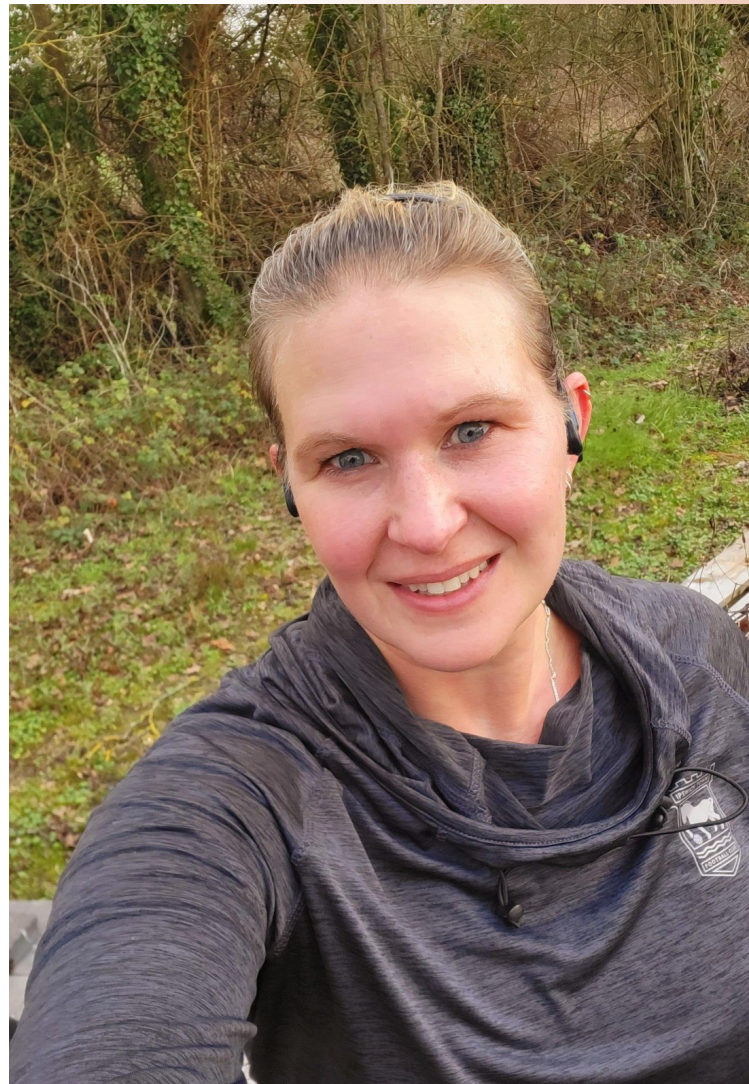


## A Big Applaud to Jane and Michelle Running the London Marathon in April 2023 For East Meru Community School

Come one come all let join and support Jane and Michelle for this amazing charity work they are doing, it doesn't matter how much you have any small amount will take them far.

We are very grateful to hear that Jane, one of our long-time supporters and a friend of hers, Michelle, are running the London Marathon in April. Jane has taken part in many events since the school opened to raise funds for the school, including a number of marathons and half-marathons, and she is now fulfilling an ambition of hers to run the big London Marathon for EMCS. She is grateful to Michelle for joining her in her aim to raise £1,000. If you are able to support them, and donate to the school, please go to their Just Giving page <https://www.justgiving.com/fundraising/jane-wall4>.

Every single donation is gratefully received and such an encouragement to Jane and Michelle as they train and then ultimately run the streets of London. **Thank you so much!**







## East Meru Community School – Tanzania

### Pupil Sponsorship Appeal for 2023

**..... because every child deserves the chance to learn**

**Please help us to keep this smile!**

**For just £20, €25, AUS\$30, US\$25 per month**

**East Meru Community School** is an English Medium Primary School located in Maruvango, a remote rural village in Northern Tanzania.

Children, of all abilities, are recruited from the most needy families in the local community and all their needs are provided for through our sponsorship programme.

#### **Monthly sponsorship payments are used to provide:**

Full uniform including shoes, two shirts or dresses, two pairs of trousers and one sweater

\* The teacher's salary \* Teaching materials \* Classroom stationery \* Daily tea and a healthy lunch

We have small classes, a maximum of 30, and we aim to provide a conducive environment for learning with good teaching resources and well qualified teachers who share the caring, nurturing ethos of the school.

If you wish to support us for any amount please see our donation link below, your donation will help us with fruit, milk or stationary.

Any amount will be much appreciated, our online donation [link https://www.justgiving.com/foemcs](https://www.justgiving.com/foemcs)

*If you would like to become part of our East Meru Community School family and sponsor one of our children, please contact Ian and Mary Horne [emcsschool@gmail.com](mailto:emcsschool@gmail.com). We would be so happy to hear from you!*